

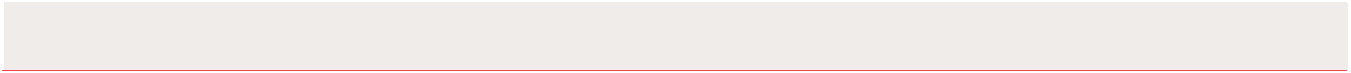
**Rampion 2 Wind Farm**  
**Category 6:**  
**Environmental Statement**  
**Volume 3, Chapter 15: Seascape,**  
**landscape and visual impact**  
**assessment (Part 3 of 8)**  
**Date: August 2023**  
**Revision A**

Document Reference: 6.3.15  
Pursuant to: APFP Regulation 5 (2) (a)  
Ecodoc number: 004884762-01



## Document revisions

Revision	Date	Status/reason for issue	Author	Checked by	Approved by
A	04/08/2023	Final for DCO Application	WSP	RED	RED



# Contents

## List of Figures

Figure number	Figure Title	APFP number	Ecodoc number	Revision	Revision Date	Document Part
Figure 15.1	SLVIA project design envelope	5 (2) (a)	004866164-01	A	04/08/2023	Part 1 of 8
Figure 15.2	Wind farm array area design evolution	5 (2) (a)	004866165-01	A	04/08/2023	Part 1 of 8
Figure 15.3	Site location and SLVIA Study Area	5 (2) (a)	004866167-01	A	04/08/2023	Part 1 of 8
Figure 15.4	Seascape character	5 (2) (a)	004866170-01	A	04/08/2023	Part 1 of 8
Figure 15.5	Landscape character (National)	5 (2) (a)	004866171-01	A	04/08/2023	Part 1 of 8
Figure 15.6a	Landscape character (County)	5 (2) (a)	004866172-01	A	04/08/2023	Part 1 of 8
Figure 15.6b	Landscape character (County) - legend	5 (2) (a)	004866173-01	A	04/08/2023	Part 1 of 8
Figure 15.7	Landscape designations	5 (2) (a)	004866174-01	A	04/08/2023	Part 1 of 8
Figure 15.8	Landform	5 (2) (a)	004866175-01	A	04/08/2023	Part 1 of 8
Figure 15.9	Visual receptors	5 (2) (a)	004866176-01	A	04/08/2023	Part 1 of 8
Figure 15.10	Viewpoints	5 (2) (a)	004866177-01	A	04/08/2023	Part 1 of 8

Figure number	Figure Title	APFP number	Ecodoc number	Revision	Revision Date	Document Part
Figure 15.11	Baseline lighting - South Downs National Park	5 (2) (a)	004866178-01	A	04/08/2023	Part 1 of 8
Figure 15.12	South Downs Dark Sky Reserve	5 (2) (a)	004866179-01	A	04/08/2023	Part 1 of 8
Figure 15.13	Comparative blade tip ZTV (325m blade tip) – 50km ES and PEIR Layout	5 (2) (a)	004866180-01	A	04/08/2023	Part 1 of 8
Figure 15.14a	Blade tip ZTV (325m blade tip) – 50km study area (A3)	5 (2) (a)	004866181-01	A	04/08/2023	Part 1 of 8
Figure 15.14b	Blade tip ZTV (325m blade tip) – 50km study area (A1)	5 (2) (a)	004866182-01	A	04/08/2023	Part 1 of 8
Figure 15.15	Blade tip ZTV with surface feature screening – 50 km study area (A1)	5 (2) (a)	004866184-01	A	04/08/2023	Part 1 of 8
Figure 15.16	Hub height ZTV (177.5m hub height) – 50km study area (A3)	5 (2) (a)	004866186-01	A	04/08/2023	Part 1 of 8
Figure 15.17	Horizontal angle ZTV	5 (2) (a)	004866188-01	A	04/08/2023	Part 2 of 8
Figure 15.18	Blade tip ZTV with seascape character	5 (2) (a)	004866189-01	A	04/08/2023	Part 2 of 8

<b>Figure number</b>	<b>Figure Title</b>	<b>APFP number</b>	<b>Ecodoc number</b>	<b>Revision</b>	<b>Revision Date</b>	<b>Document Part</b>
Figure 15.19a-d	Blade tip ZTV landscape character	5 (2) (a)	004866191-01	A	04/08/2023	Part 2 of 8
Figure 15.20a-d	Blade tip ZTV with landscape designations	5 (2) (a)	004866192-01	A	04/08/2023	Part 2 of 8
Figure 15.21a-d	Blade tip ZTV with visual receptors	5 (2) (a)	004866193-01	A	04/08/2023	Part 3 of 8
Figure 15.22	Cumulative ZTV with Rampion 1	5 (2) (a)	004866194-01	A	04/08/2023	Part 3 of 8
Figure 15.23	Blade tip ZTV with visibility range	5 (2) (a)	004866195-01	A	04/08/2023	Part 3 of 8
Figure 15.24a-d	Blade tip ZTV with National Trails	5 (2) (a)	004866196-01	A	04/08/2023	Part 3 of 8
Figure 15.25	Nacelle aviation lighting ZTV South Downs National Park	5 (2) (a)	004866197-01	A	04/08/2023	Part 4 of 8
Figure 15.26a-f	Viewpoint 1 Beachy Head	5 (2) (a)	004866198-01	A	04/08/2023	Part 4 of 8
Figure 15.27a-h	Viewpoint 2 Birling Gap	5 (2) (a)	004866199-01	A	04/08/2023	Part 4 of 8
Figure 15.28a-f	Viewpoint 3 Seven Sisters Country Park	5 (2) (a)	004866200-01	A	04/08/2023	Part 4 of 8
Figure 15.29a-f	Viewpoint 4 Seaford Head	5 (2) (a)	004866201-01	A	04/08/2023	Part 4 of 8
Figure 15.30a-f	Viewpoint 5 Newhaven (Castle Hill)	5 (2) (a)	004866202-01	A	04/08/2023	Part 4 of 8

<b>Figure number</b>	<b>Figure Title</b>	<b>APFP number</b>	<b>Ecodoc number</b>	<b>Revision</b>	<b>Revision Date</b>	<b>Document Part</b>
Figure 15.31a-f	Viewpoint 6 Peacehaven	5 (2) (a)	004866203-01	A	04/08/2023	Part 4 of 8
Figure 15.32a-f	Viewpoint 7 Beacon Hill, Rottingdean	5 (2) (a)	004866204-01	A	04/08/2023	Part 4 of 8
Figure 15.33a-j	Viewpoint 8 Brighton seafront promenade	5 (2) (a)	004866205-01	A	04/08/2023	Part 4 of 8
Figure 15.34a-i	Viewpoint 9 Shoreham/A259 coastal road	5 (2) (a)	004866206-01	A	04/08/2023	Part 5 of 8
Figure 15.35a-i	Viewpoint 10 Worthing seafront promenade	5 (2) (a)	004866207-01	A	04/08/2023	Part 5 of 8
Figure 15.36a-i	Viewpoint 11 Littlehampton seafront promenade	5 (2) (a)	004866208-01	A	04/08/2023	Part 5 of 8
Figure 15.37a-i	Viewpoint 12 Bognor Regis seafront promenade	5 (2) (a)	004866209-01	A	04/08/2023	Part 5 of 8
Figure 15.38a-i	Viewpoint 13 Pagham Beach	5 (2) (a)	004866210-01	A	04/08/2023	Part 5 of 8
Figure 15.39a-f	Viewpoint 14 Selsey seafront promenade	5 (2) (a)	004866211-01	A	04/08/2023	Part 5 of 8
Figure 15.40a-b	Viewpoint 15 Willingdon Hill	5 (2) (a)	004866212-01	A	04/08/2023	Part 5 of 8
Figure 15.41a-f	6.3.15.41 Rampion 2 ES Volume 3	5 (2) (a)	004866213-01	A	04/08/2023	Part 5 of 8

Figure number	Figure Title	APFP number	Ecodoc number	Revision	Revision Date	Document Part
	Figure 15.41 Viewpoint 16 Firle Beacon					
Figure 15.42a-m	Viewpoint 17 Devil's Dyke	5 (2) (a)	004866214 -01	A	04/08/2023	Part 5 of 8
Figure 15.43a-h	Viewpoint 18 Cissbury Ring	5 (2) (a)	004866215 -01	A	04/08/2023	Part 6 of 8
Figure 15.44a-i	Viewpoint 19 Highdown Hill	5 (2) (a)	004866216 -01	A	04/08/2023	Part 6 of 8
Figure 15.45a-b	Viewpoint 20 Springhead Hill	5 (2) (a)	004866217 -01	A	04/08/2023	Part 6 of 8
Figure 15.46a-h	Viewpoint 21 Bignor Hill	5 (2) (a)	004866218 -01	A	04/08/2023	Part 6 of 8
Figure 15.47a-f	Viewpoint 22 Eastoke Point (Chichester Harbour AONB)	5 (2) (a)	004866219 -01	A	04/08/2023	Part 6 of 8
Figure 15.48a-f	Viewpoint 24 Bembridge, Isle of Wight	5 (2) (a)	004866220 -01	A	04/08/2023	Part 6 of 8
Figure 15.49a-b	Viewpoint 26 Low Weald (A24, near Ashington)	5 (2) (a)	004866221 -01	A	04/08/2023	Part 6 of 8
Figure 15.50a-h	Viewpoint 27 Hollingbury Golf Course/Hill Fort	5 (2) (a)	004866222 -01	A	04/08/2023	Part 6 of 8
Figure 15.51a-f	Viewpoint 28 Cuckmere Haven Beach	5 (2) (a)	004866223 -01	A	04/08/2023	Part 6 of 8
Figure 15.52a-b	Viewpoint 29 Kingley Vale National	5 (2) (a)	004866224 -01	A	04/08/2023	Part 6 of 8

Figure number	Figure Title	APFP number	Ecodoc number	Revision	Revision Date	Document Part
	Nature Reserve					
Figure 15.53a-b	Viewpoint 30 Halnaker Windmill	5 (2) (a)	004866225 -01	A	04/08/2023	Part 6 of 8
Figure 15.54a-g	Viewpoint 31 Butser Hill National Nature Reserve	5 (2) (a)	004866226 -01	A	04/08/2023	Part 6 of 8
Figure 15.55a-b	Viewpoint 32 Levin Down	5 (2) (a)	004866227 -01	A	04/08/2023	Part 7 of 8
Figure 15.56a-e	Viewpoint 33 Arundel Castle	5 (2) (a)	004866228 -01	A	04/08/2023	Part 7 of 8
Figure 15.57a-f	Viewpoint 34 Bembridge Fort	5 (2) (a)	004866229 -01	A	04/08/2023	Part 7 of 8
Figure 15.58a-f	Viewpoint 35 St. Boniface Down above Ventnor	5 (2) (a)	004866230 -01	A	04/08/2023	Part 7 of 8
Figure 15.59a-h	Viewpoint 40 Climping Beach	5 (2) (a)	004866231 -01	A	04/08/2023	Part 7 of 8
Figure 15.60a-b	Viewpoint 41 Slindon Folly	5 (2) (a)	004866232 -01	A	04/08/2023	Part 7 of 8
Figure 15.61a-c	Viewpoint 43 Gilkicker Point	5 (2) (a)	004866233 -01	A	04/08/2023	Part 7 of 8
Figure 15.62a-b	Viewpoint 47 High Weald (near Bolney)	5 (2) (a)	004866234 -01	A	04/08/2023	Part 7 of 8
Figure 15.63a-f	Viewpoint 50 The Trundle	5 (2) (a)	004866235 -01	A	04/08/2023	Part 7 of 8



Figure number	Figure Title	APFP number	Ecodoc number	Revision	Revision Date	Document Part
Figure 15.64a-b	Viewpoint 51 Ditchling Beacon	5 (2) (a)	004866236 -01	A	04/08/2023	Part 7 of 8
Figure 15.65a-h	Viewpoint 52 Chanctonbury Ring	5 (2) (a)	004866237 -01	A	04/08/2023	Part 7 of 8
Figure 15.66a-b	Viewpoint 53 Amberley Mount	5 (2) (a)	004866238 -01	A	04/08/2023	Part 7 of 8
Figure 15.67a-b	Viewpoint 54 Chantry Hill	5 (2) (a)	004866239 -01	A	04/08/2023	Part 7 of 8
Figure 15.68a-b	Viewpoint 55 Beeding Hill	5 (2) (a)	004866240 -01	A	04/08/2023	Part 7 of 8
Figure 15.69a-e	Viewpoint 57 Telscomb Tye	5 (2) (a)	004866241 -01	A	04/08/2023	Part 8 of 8
Figure 15.70a-b	Viewpoint 58 Wolstonbury Hill	5 (2) (a)	004866242 -01	A	04/08/2023	Part 8 of 8
Figure 15.71a-b	Viewpoint 61 A27 near Lancing College	5 (2) (a)	004866243 -01	A	04/08/2023	Part 8 of 8
Figure 15.72a-b	Viewpoint 62 Beacon Hill, South Downs Way	5 (2) (a)	004866244 -01	A	04/08/2023	Part 8 of 8
Figure 15.73a-e	Viewpoint A East Wittering	5 (2) (a)	004866245 -01	A	04/08/2023	Part 8 of 8
Figure 15.74a-b	Viewpoint B1 Chichester Marina	5 (2) (a)	004866246 -01	A	04/08/2023	Part 8 of 8
Figure 15.75a-b	Viewpoint B2 Dell Quay	5 (2) (a)	004866247 -01	A	04/08/2023	Part 8 of 8
Figure 15.76a-b	Viewpoint C Eastergate	5 (2) (a)	004866248 -01	A	04/08/2023	Part 8 of 8

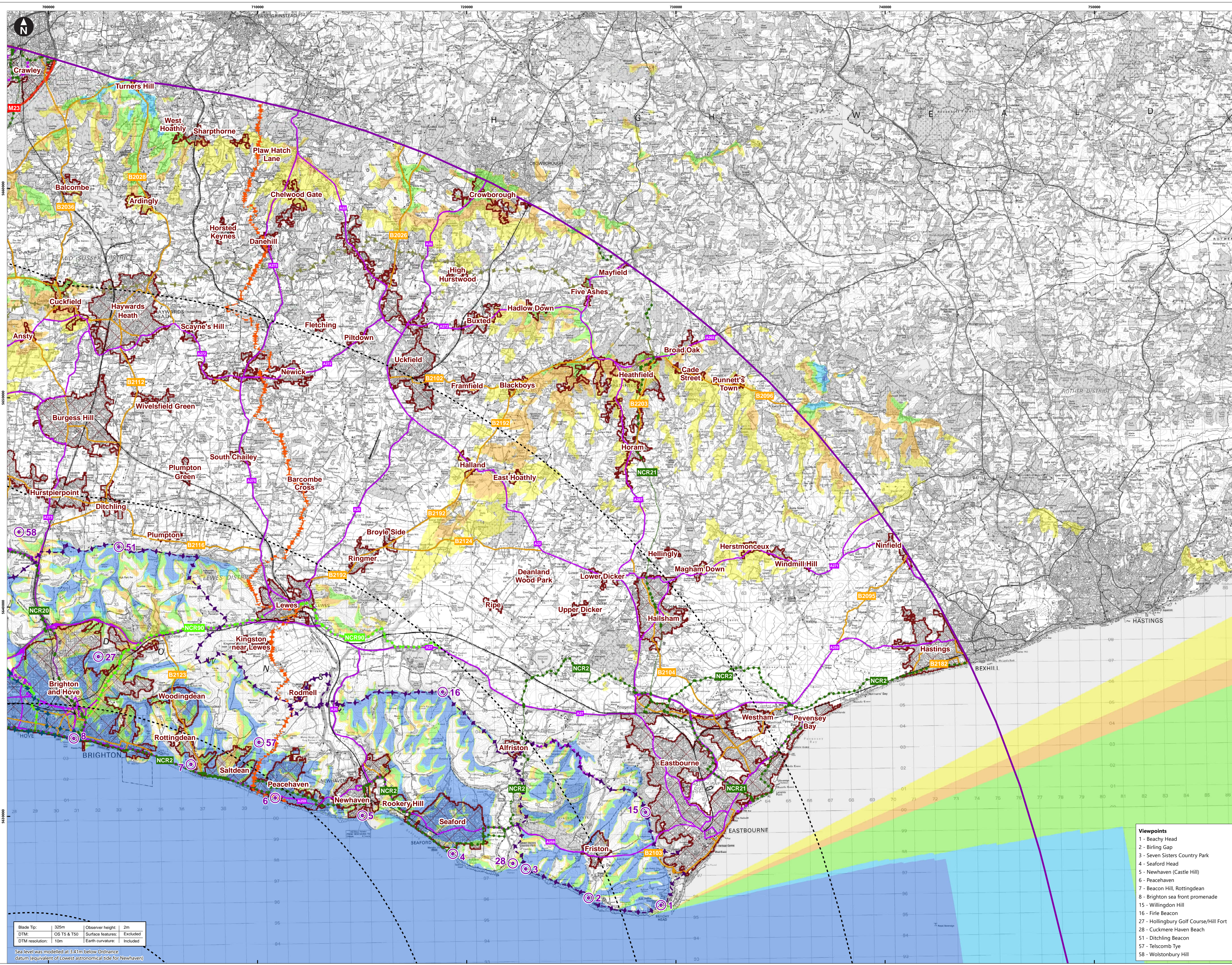
Figure number	Figure Title	APFP number	Ecodoc number	Revision	Revision Date	Document Part
	(proposed A29)					
Figure 15.77a-b	Viewpoint D Footpath between A259 and Colworth	5 (2) (a)	004866249-01	A	04/08/2023	Part 8 of 8
Figure 15.78a-i	Viewpoint E Ferring Gap	5 (2) (a)	004866250-01	A	04/08/2023	Part 8 of 8
Figure 15.79a-h	Viewpoint F Lancing Beach	5 (2) (a)	004866251-01	A	04/08/2023	Part 8 of 8
Figure 15.80	Single frame montage Viewpoint 1 Beachy Head	5 (2) (a)	004866252-01	A	04/08/2023	Part 8 of 8
Figure 15.81	Single frame montage Viewpoint 2 Birling Gap	5 (2) (a)	004866253-01	A	04/08/2023	Part 8 of 8
Figure 15.82	Single frame montage Viewpoint 7 Beacon Hill, Rottingdean	5 (2) (a)	004866254-01	A	04/08/2023	Part 8 of 8
Figure 15.83	Single frame montage Viewpoint 18 Cissbury Ring	5 (2) (a)	004866255-01	A	04/08/2023	Part 8 of 8
Figure 15.84	Single frame montage Viewpoint 19 Highdown Hill	5 (2) (a)	004866256-01	A	04/08/2023	Part 8 of 8
Figure 15.85	Single frame montage Viewpoint 22 Eastoke Point (Chichester	5 (2) (a)	004866257-01	A	04/08/2023	Part 8 of 8

Figure number	Figure Title	APFP number	Ecodoc number	Revision	Revision Date	Document Part
	Harbour AONB)					
Figure 15.86	Single frame montage Viewpoint 27 Hollingbury Golf Course/Hill Fort	5 (2) (a)	004866258 -01	A	04/08/2023	Part 8 of 8
Figure 15.87	Single frame montage Viewpoint 28 Cuckmere Haven Beach	5 (2) (a)	004866259 -01	A	04/08/2023	Part 8 of 8
Figure 15.88	Single frame montage Viewpoint 33 Arundel Castle	5 (2) (a)	004866260 -01	A	04/08/2023	Part 8 of 8
Figure 15.89	Single frame montage Viewpoint 34 Bembridge Fort	5 (2) (a)	004866261 -01	A	04/08/2023	Part 8 of 8
Figure 15.90	Single frame montage Viewpoint 50 the Trundle	5 (2) (a)	004866262 -01	A	04/08/2023	Part 8 of 8
Figure 15.91	Single frame montage Viewpoint 52 Chanctonbury Ring	5 (2) (a)	004866263 -01	A	04/08/2023	Part 8 of 8
Figure 15.92	Single frame montage Viewpoint 57 Telscomb Tye	5 (2) (a)	004866264 -01	A	04/08/2023	Part 8 of 8
Figure 15.93	Comparative wireline	5 (2) (a)	004866265 -01	A	04/08/2023	Part 8 of 8

Figure number	Figure Title	APFP number	Ecodoc number	Revision	Revision Date	Document Part
	Viewpoint 1 Beachy Head					
Figure 15.94	Comparative wireline Viewpoint 2 Birling Gap	5 (2) (a)	004866266 -01	A	04/08/2023	Part 8 of 8
Figure 15.95	Comparative wireline Viewpoint 3 Seven Sisters	5 (2) (a)	004866267 -01	A	04/08/2023	Part 8 of 8
Figure 15.96	Comparative wireline Viewpoint 4 Seaford Head	5 (2) (a)	004866268 -01	A	04/08/2023	Part 8 of 8
Figure 15.97	Comparative wireline Viewpoint 7 Rottingdean	5 (2) (a)	004866269 -01	A	04/08/2023	Part 8 of 8
Figure 15.98	Comparative wireline Viewpoint 8 Brighton seafront promenade	5 (2) (a)	004866270 -01	A	04/08/2023	Part 8 of 8
Figure 15.99	Comparative wireline Viewpoint 10 Worthing	5 (2) (a)	004866271 -01	A	04/08/2023	Part 8 of 8
Figure 15.100	Comparative wireline Viewpoint 13 Pagham	5 (2) (a)	004866272 -01	A	04/08/2023	Part 8 of 8
Figure 15.101	Comparative wireline Viewpoint 17 Devil's Dyke	5 (2) (a)	004866273 -01	A	04/08/2023	Part 8 of 8
Figure 15.102	Comparative wireline Viewpoint 18	5 (2) (a)	004866274 -01	A	04/08/2023	Part 8 of 8

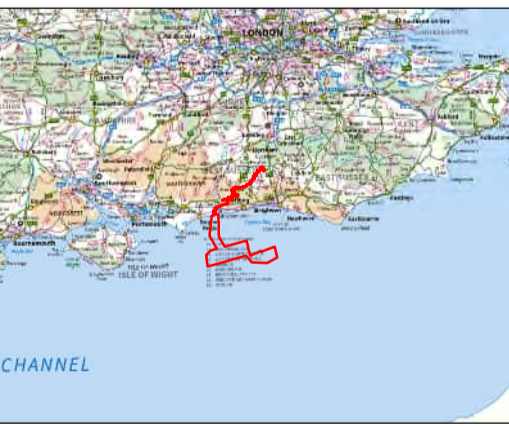
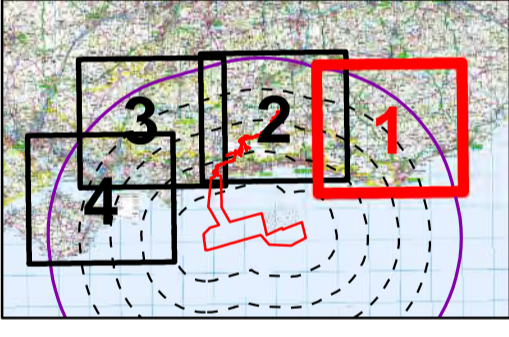
Figure number	Figure Title	APFP number	Ecodoc number	Revision	Revision Date	Document Part
	Cissbury Ring					
Figure 15.103	Comparative wireline Viewpoint 19 Highdown Hill	5 (2) (a)	004866275 -01	A	04/08/2023	Part 8 of 8
Figure 15.104	Comparative wireline Viewpoint 22 Eastoke Point (Chichester Harbour AONB)	5 (2) (a)	004866276 -01	A	04/08/2023	Part 8 of 8
Figure 15.105	Comparative wireline Viewpoint 27 Hollingbury Hill	5 (2) (a)	004866277 -01	A	04/08/2023	Part 8 of 8
Figure 15.106	Comparative wireline Viewpoint 28 Cuckmere Haven	5 (2) (a)	004866278 -01	A	04/08/2023	Part 8 of 8
Figure 15.107	Comparative wireline Viewpoint 34 Bembridge Fort	5 (2) (a)	004866281 -01	A	04/08/2023	Part 8 of 8
Figure 15.108	Comparative wireline Viewpoint 50 The Trundle	5 (2) (a)	004866282 -01	A	04/08/2023	Part 8 of 8
Figure 15.109	Comparative wireline Viewpoint 54 Chantry Hill	5 (2) (a)	004866283 -01	A	04/08/2023	Part 8 of 8

Page intentionally blank



Contains OS data © Crown copyright and database right (2022).  
 © Crown Copyright. All rights reserved (2022). Licence number 010001673. Data derived from RWE data © RWE 2022. Contains information licensed under the Open Government Licence v3.0.

- Key**
- Proposed DCO Order Limits
  - 50km Study Area
  - 10km Radii
  - Viewpoint
  - ◆ South Downs Way
  - ◆ Monarch's Way
  - ◆ Greenwich Meridian Trail (Vanguard Way)
  - ◆ Sussex Diamond Way
- RouteType**
- National cycle network
  - National cycle network link
  - Regional cycle network
  - Railway
  - Motorway
  - Primary and A Road
  - B Road
  - Settlement area
- Zone of theoretical visibility (blade tip)**
- No. of turbines theoretically visible**
- 1 - 13
  - 14 - 26
  - 27 - 39
  - 40 - 52
  - 53 - 65



Scale: 1:80,000  
 WGS 1984 UTM Zone 30N Transverse Mercator

Rampion 2 Wind Farm  
 Rampion 2 Offshore Wind Farm

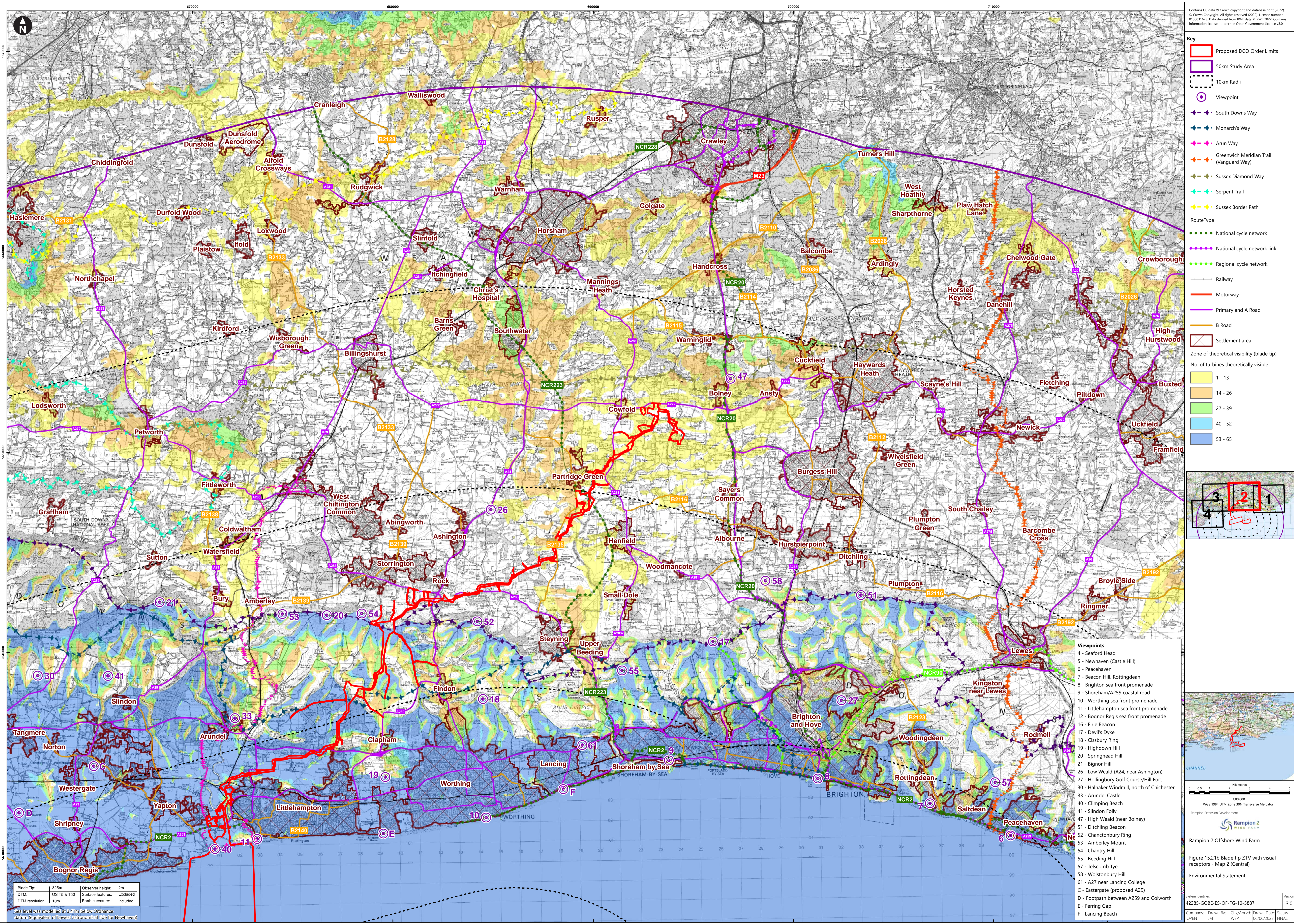
Figure 15.2.1a Blade tip ZTV with visual receptors - Map 1 (East)  
 Environmental Statement

System Identifier: 42285-GOBE-ES-OF-FG-10-5887  
 Version: 3.0  
 Company: OPEN  
 Drawn By: JM  
 Chk/Aprvd: WSP  
 Drawn Date: 06/06/2023  
 Status: FINAL

Blade Tip: 325m  
 Observer height: 2m  
 DTM: OS T5 & T50  
 Surface features: Excluded  
 DTM resolution: 10m  
 Earth curvature: Included

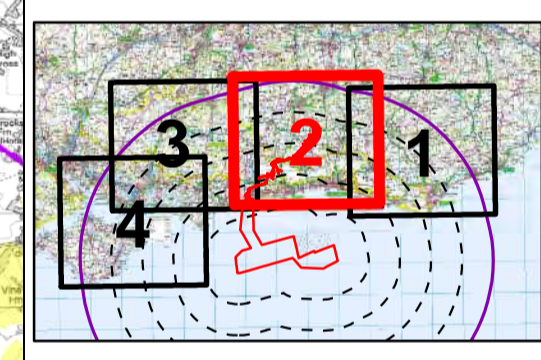
Sea level was modelled at 3.41m below Ordnance datum (equivalent of Lowest Astronomical Tide for Newhaven)

- Viewpoints**
- 1 - Beachy Head
  - 2 - Birling Gap
  - 3 - Seven Sisters Country Park
  - 4 - Seaford Head
  - 5 - Newhaven (Castle Hill)
  - 6 - Peacehaven
  - 7 - Beacon Hill, Rottingdean
  - 8 - Brighton sea front promenade
  - 15 - Willington Hill
  - 16 - Firle Beacon
  - 27 - Hollingbury Golf Course/Hill Fort
  - 28 - Cuckmere Haven Beach
  - 51 - Ditchling Beacon
  - 57 - Telscomb Tye
  - 58 - Wolstonbury Hill



Contains OS data © Crown copyright and database right (2022).  
 © Crown Copyright. All rights reserved (2022). Licence number 010001673. Data derived from RWE data © RWE 2022. Contains information licensed under the Open Government Licence v3.0.

- Key**
- Proposed DCO Order Limits
  - 50km Study Area
  - 10km Radii
  - Viewpoint
  - ◆ South Downs Way
  - ◆ Monarch's Way
  - ◆ Arun Way
  - ◆ Greenwich Meridian Trail (Vanguard Way)
  - ◆ Sussex Diamond Way
  - ◆ Serpent Trail
  - ◆ Sussex Border Path
  - National cycle network
  - National cycle network link
  - Regional cycle network
  - Railway
  - Motorway
  - Primary and A Road
  - B Road
  - Settlement area
  - Zone of theoretical visibility (blade tip)
  - No. of turbines theoretically visible
  - 1 - 13
  - 14 - 26
  - 27 - 39
  - 40 - 52
  - 53 - 65



- Viewpoints**
- 4 - Seaford Head
  - 5 - Newhaven (Castle Hill)
  - 6 - Peacehaven
  - 7 - Beacon Hill, Rottingdean
  - 8 - Brighton sea front promenade
  - 9 - Shoreham/A259 coastal road
  - 10 - Worthing sea front promenade
  - 11 - Littlehampton sea front promenade
  - 12 - Bognor Regis sea front promenade
  - 16 - Firle Beacon
  - 17 - Devil's Dyke
  - 18 - Cissbury Ring
  - 19 - Highdown Hill
  - 20 - Springhead Hill
  - 21 - Bignor Hill
  - 26 - Low Weald (A24, near Ashington)
  - 27 - Hollingbury Golf Course/Hill Fort
  - 30 - Hainaker Windmill, north of Chichester
  - 33 - Arundel Castle
  - 40 - Climping Beach
  - 41 - Slindon Folly
  - 47 - High Weald (near Bolney)
  - 51 - Ditchling Beacon
  - 52 - Chanctonbury Ring
  - 53 - Amberley Mount
  - 54 - Chantry Hill
  - 55 - Beeding Hill
  - 57 - Telscomb Tye
  - 58 - Wolstonbury Hill
  - 61 - A27 near Lancing College
  - C - Eastgate (proposed A29)
  - D - Footpath between A259 and Colworth
  - E - Ferring Gap
  - F - Lancing Beach

Blade Tip: 325m | Observer height: 2m  
 DTM: OS T5 & T50 | Surface features: Excluded  
 DTM resolution: 10m | Earth curvature: Included  
 Sea level was modelled at 3.41m below Ordnance datum (equivalent of Lowest Astronomical Tide for Newhaven)



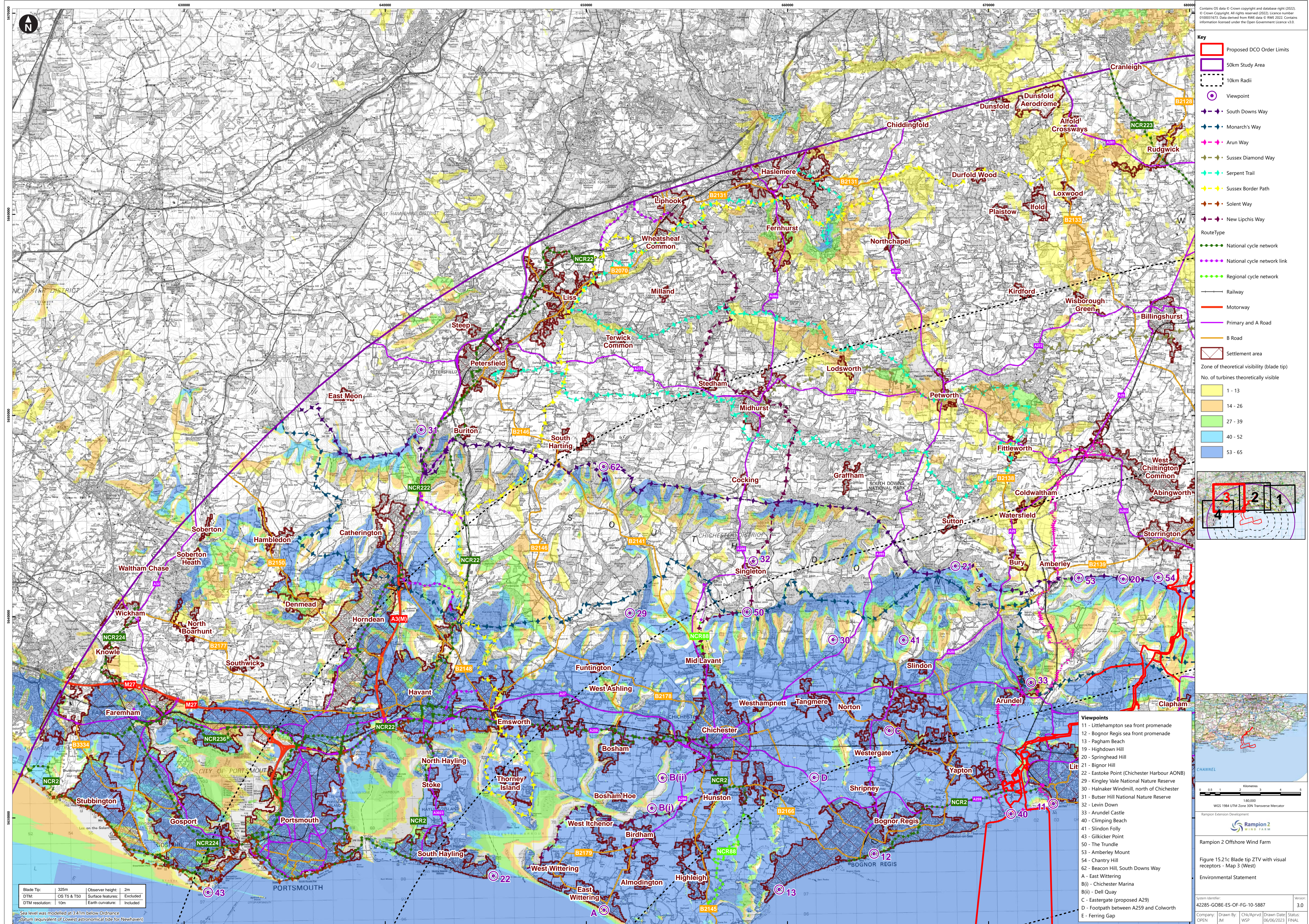
Ramplion 2 Offshore Wind Farm

Figure 15.21b Blade tip ZTV with visual receptors - Map 2 (Central)

Environmental Statement

System Identifier: 42285-GOBE-ES-OF-FG-10-5887 | Version: 3.0  
 Company: OPEN | Drawn By: WSP | Drawn Date: 06/06/2023 | Status: FINAL





Contains OS data © Crown copyright and database right (2022).  
 © Crown Copyright. All rights reserved (2022). Licence number: 010001673. Data derived from RWE data © RWE 2022. Contains information licensed under the Open Government Licence v3.0.

**Key**

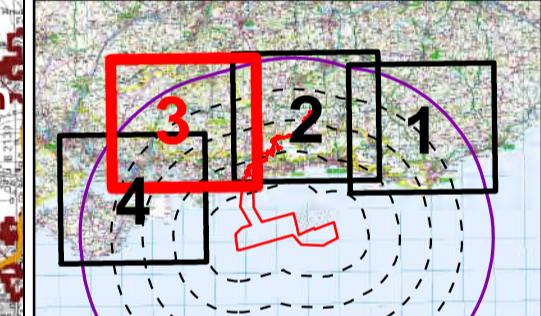
- Proposed DCO Order Limits
- 50km Study Area
- 10km Radii
- Viewpoint
- South Downs Way
- Monarch's Way
- Arun Way
- Sussex Diamond Way
- Serpent Trail
- Sussex Border Path
- Solent Way
- New Lipchis Way

**RouteType**

- National cycle network
- National cycle network link
- Regional cycle network
- Railway
- Motorway
- Primary and A Road
- B Road
- Settlement area
- Zone of theoretical visibility (blade tip)

**No. of turbines theoretically visible**

- 1 - 13
- 14 - 26
- 27 - 39
- 40 - 52
- 53 - 65



- Viewpoints**
- 11 - Littlehampton sea front promenade
  - 12 - Bognor Regis sea front promenade
  - 13 - Pagham Beach
  - 19 - Highdown Hill
  - 20 - Springhead Hill
  - 21 - Bignor Hill
  - 22 - Eastoke Point (Chichester Harbour AONB)
  - 29 - Kingley Vale National Nature Reserve
  - 30 - Hainaker Windmill, north of Chichester
  - 31 - Butser Hill National Nature Reserve
  - 32 - Levin Down
  - 33 - Arundel Castle
  - 40 - Climping Beach
  - 41 - Slindon Folly
  - 43 - Glicker Point
  - 50 - The Trundle
  - 53 - Amberley Mount
  - 54 - Chantry Hill
  - 62 - Beacon Hill, South Downs Way
- A** - East Wittering  
**B(i)** - Chichester Marina  
**B(ii)** - Dell Quay  
**C** - Eastergate (proposed A29)  
**D** - Footpath between A259 and Colworth  
**E** - Ferring Gap

Blade Tip: 325m | Observer height: 2m  
 DTM: OS T5 & T50 | Surface features: Excluded  
 DTM resolution: 10m | Earth curvature: Included  
 Sea level was modelled at 3.41m below Ordnance datum (equivalent of Lowest Astronomical Tide for Newhaven)

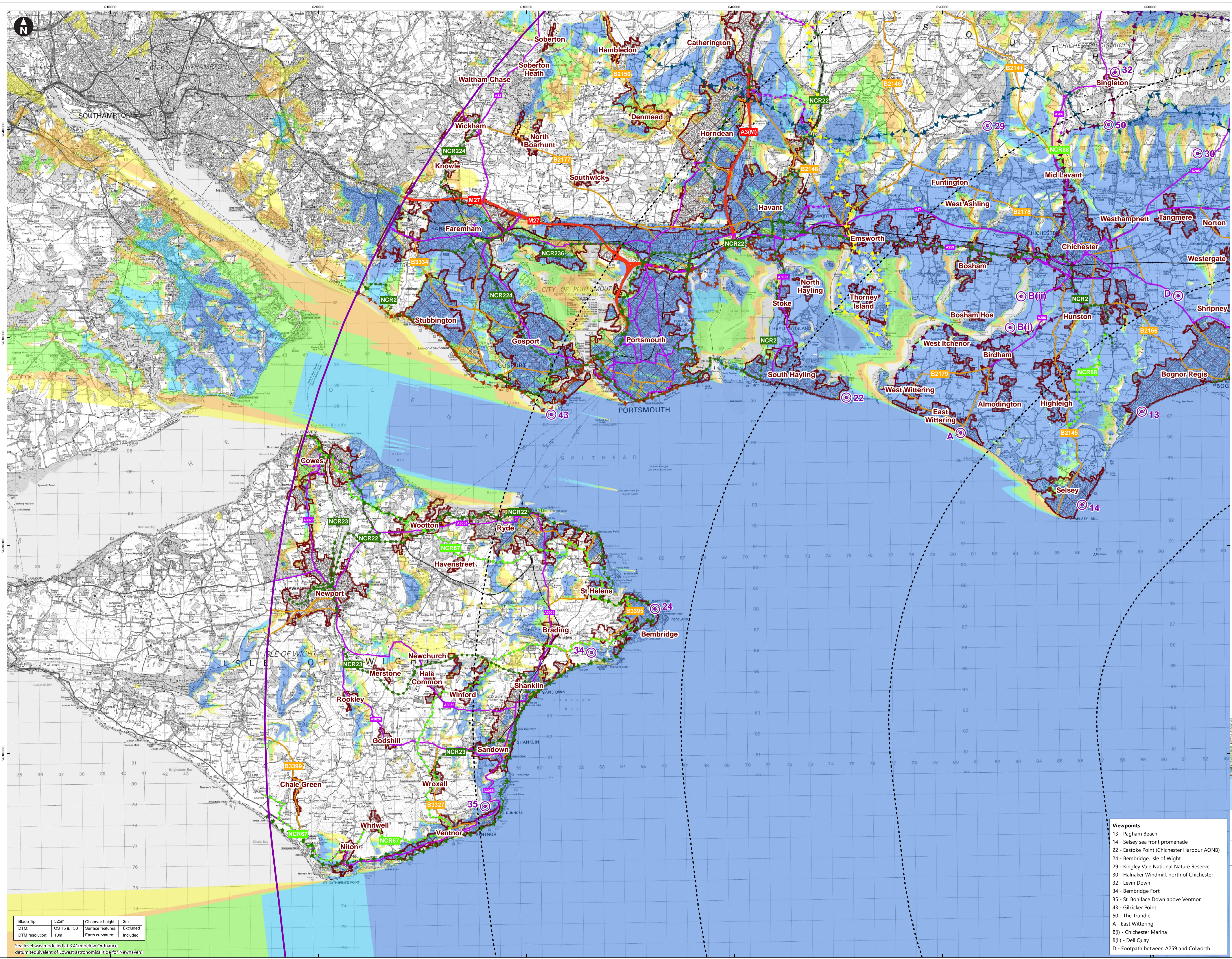
Scale: 1:180,000  
 WGS 1984 UTM Zone 30N Transverse Mercator

Rampion 2 Offshore Wind Farm

Figure 15.21c Blade tip ZTV with visual receptors - Map 3 (West)

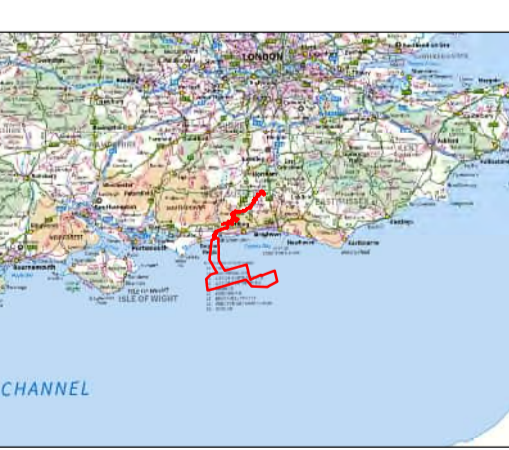
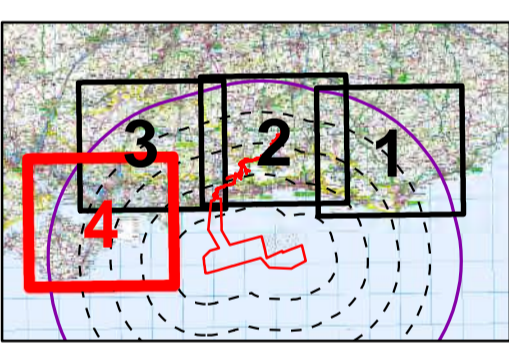
Environmental Statement

System Identifier: 42285-GOBE-ES-OF-FG-10-5887 | Version: 3.0  
 Company: OPEN | Drawn By: WSP | Chk/Approved: WSP | Drawn Date: 06/06/2023 | Status: FINAL



Contains OS data © Crown copyright and database right (2022).  
 © Crown Copyright. All rights reserved (2022). Licence number 0100031673. Data derived from RWE data © RWE 2022. Contains information licensed under the Open Government Licence v3.0.

- Key**
- Proposed DCO Order Limits
  - 50km Study Area
  - 10km Radii
  - Viewpoint
  - South Downs Way
  - Monarch's Way
  - Isle of Wight Coastal Path
  - Sussex Border Path
  - Solent Way
  - New Lipchis Way
  - RouteType
  - National cycle network
  - National cycle network link
  - Regional cycle network
  - Railway
  - Motorway
  - Primary and A Road
  - B Road
  - Settlement area
  - Zone of theoretical visibility (blade tip)
  - No. of turbines theoretically visible**
  - 1 - 13
  - 14 - 26
  - 27 - 39
  - 40 - 52
  - 53 - 65



- Viewpoints**
- 13 - Pagham Beach
  - 14 - Selsey sea front promenade
  - 22 - Eastoke Point (Chichester Harbour AONB)
  - 24 - Bembridge, Isle of Wight
  - 29 - Kingley Vale National Nature Reserve
  - 30 - Halnaker Windmill, north of Chichester
  - 32 - Levin Down
  - 34 - Bembridge Fort
  - 35 - St. Boniface Down above Ventnor
  - 43 - Glikicker Point
  - 50 - The Trundle
  - A - East Wittering
  - B(i) - Chichester Marina
  - B(ii) - Dell Quay
  - D - Footpath between A259 and Colworth

Blade Tip:	325m	Observer height:	2m
DTM:	OS T5 & T50	Surface features:	Excluded
DTM resolution:	10m	Earth curvature:	Included

Sea level was modelled at 3.41m below Ordnance datum (equivalent of Lowest astronomical Tide for Newhaven)

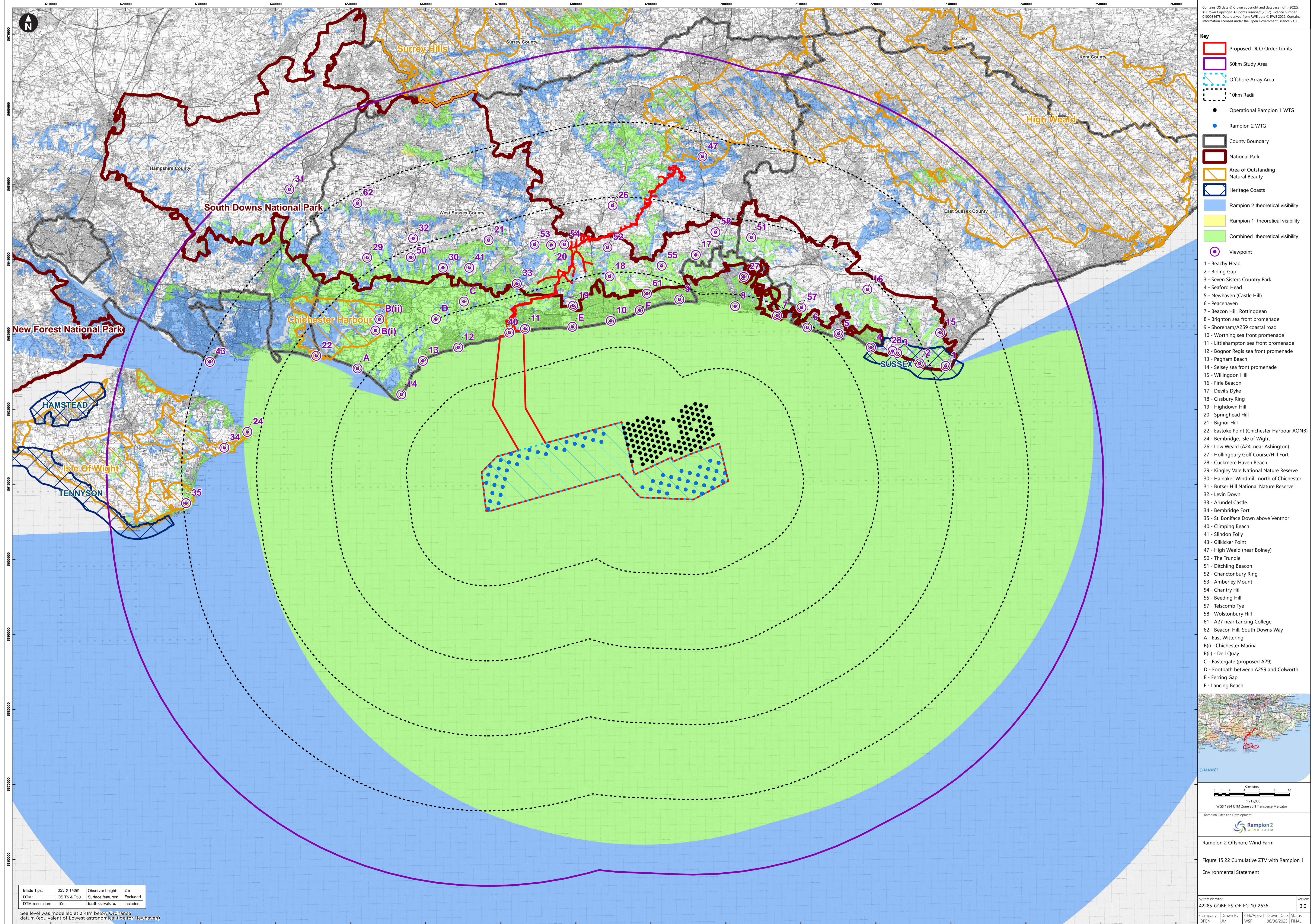
Rampion 2 Offshore Wind Farm

Figure 15.21d Blade tip ZTV with visual receptors - Map 4 (Isle of Wight)

Environmental Statement

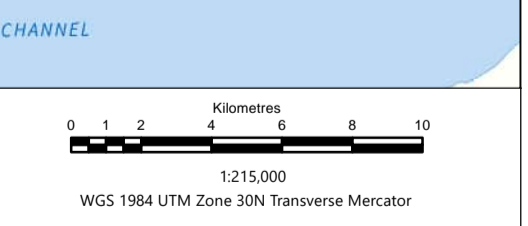
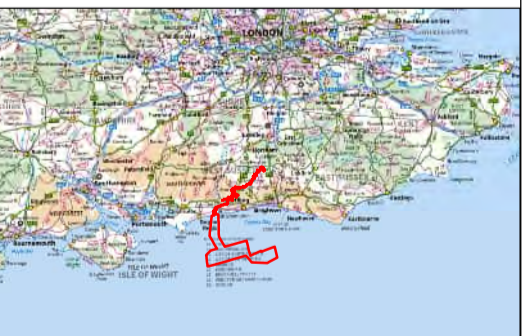
System Identifier:	42285-GOBE-ES-OF-FG-10-5887	Version:	3.0
Company:	OPEN	Drawn By:	JM
Checked/Approved:	WSP	Draw Date:	06/06/2023
Status:	FINAL		

Document uncontrolled when printed



Contains OS data © Crown copyright and database right (2022).  
 © Crown Copyright. All rights reserved (2022). Licence number: 010001673. Data derived from RWE data © RWE 2022. Contains information licensed under the Open Government Licence v3.0.

- Key**
- Proposed DCO Order Limits
  - 50km Study Area
  - Offshore Array Area
  - 10km Radii
  - Operational Rampton 1 WTG
  - Rampton 2 WTG
  - County Boundary
  - National Park
  - Area of Outstanding Natural Beauty
  - Heritage Coasts
  - Rampton 2 theoretical visibility
  - Rampton 1 theoretical visibility
  - Combined theoretical visibility
  - Viewpoint
- 1 - Beachy Head
  - 2 - Birling Gap
  - 3 - Seven Sisters Country Park
  - 4 - Seaford Head
  - 5 - Newhaven (Castle Hill)
  - 6 - Peacehaven
  - 7 - Beacon Hill, Rottingdean
  - 8 - Brighton sea front promenade
  - 9 - Shoreham/A259 coastal road
  - 10 - Worthing sea front promenade
  - 11 - Littlehampton sea front promenade
  - 12 - Bognor Regis sea front promenade
  - 13 - Pagham Beach
  - 14 - Selsey sea front promenade
  - 15 - Willington Hill
  - 16 - Firle Beacon
  - 17 - Devil's Dyke
  - 18 - Cissbury Ring
  - 19 - Highdown Hill
  - 20 - Springhead Hill
  - 21 - Bignor Hill
  - 22 - Eastoke Point (Chichester Harbour AONB)
  - 24 - Bembridge, Isle of Wight
  - 26 - Low Weald (A24, near Ashington)
  - 27 - Hollingbury Golf Course/Hill Fort
  - 28 - Cuckmere Haven Beach
  - 29 - Kingley Vale National Nature Reserve
  - 30 - Hainaker Windmill, north of Chichester
  - 31 - Butser Hill National Nature Reserve
  - 32 - Levin Down
  - 33 - Arundel Castle
  - 34 - Bembridge Fort
  - 35 - St. Boniface Down above Ventnor
  - 40 - Climping Beach
  - 41 - Slindon Folly
  - 43 - Gilkicker Point
  - 47 - High Weald (near Bolney)
  - 50 - The Trundle
  - 51 - Ditchling Beacon
  - 52 - Chantconbury Ring
  - 53 - Amberley Mount
  - 54 - Chantry Hill
  - 55 - Beeding Hill
  - 57 - Telscomb Tye
  - 58 - Wolstonbury Hill
  - 61 - A27 near Lancing College
  - 62 - Beacon Hill, South Downs Way
- A - East Wittering  
 B(i) - Chichester Marina  
 B(ii) - Dell Quay  
 C - Eastergate (proposed A29)  
 D - Footpath between A259 and Colworth  
 E - Ferring Gap  
 F - Lancing Beach



Rampton Extension Development

Rampton 2 Offshore Wind Farm

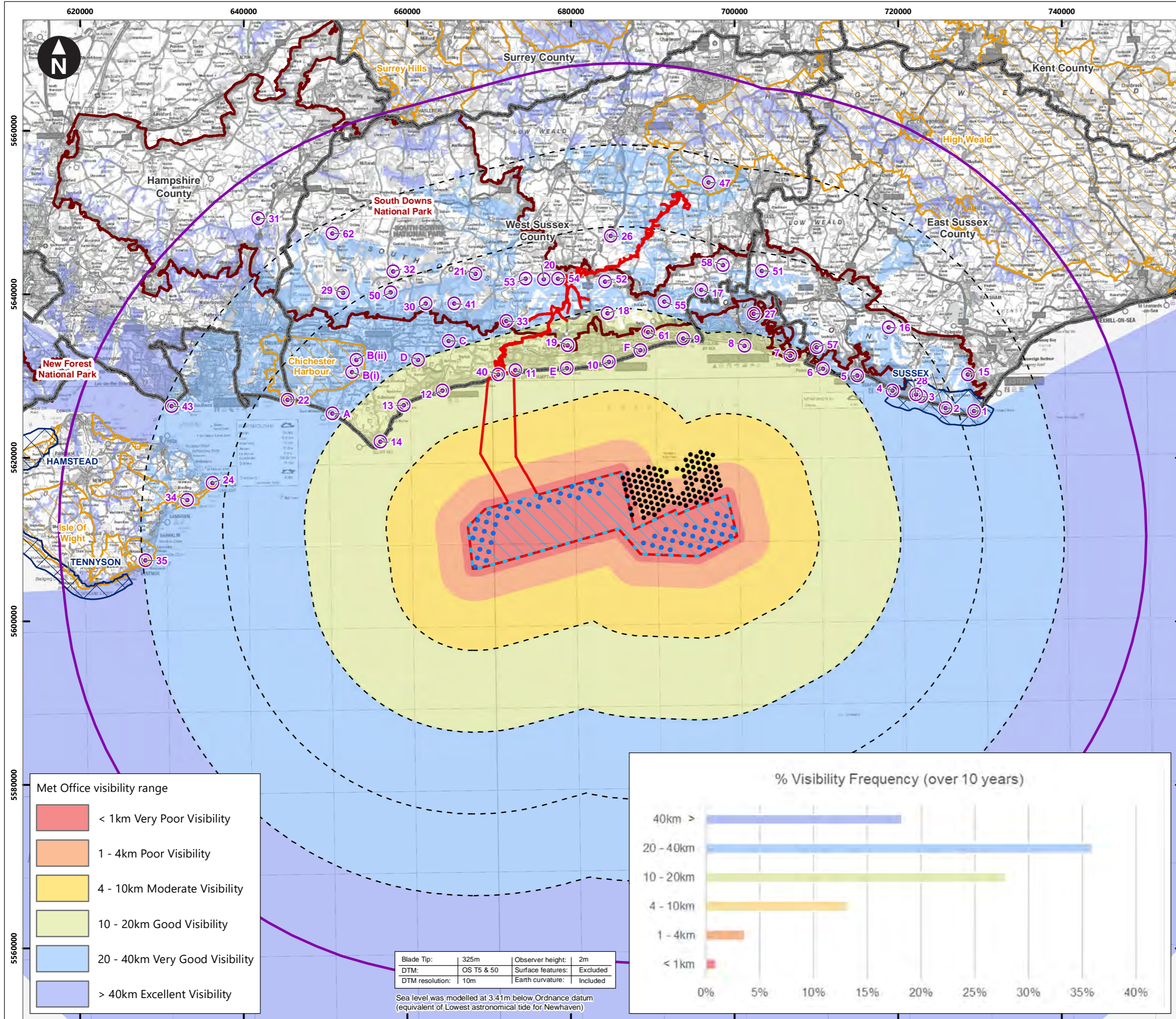
Figure 15.22 Cumulative ZTV with Rampton 1  
 Environmental Statement

System Identifier:	42285-GOBE-ES-OF-FG-10-2636	Version:	3.0
Company:	OPEN	Drawn By:	WSP
Checked:	JM	Drawn Date:	06/06/2023
Status:	FINAL		

Document uncontrolled when printed ISO A1 Landscape

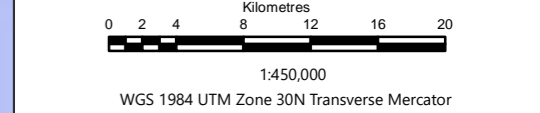
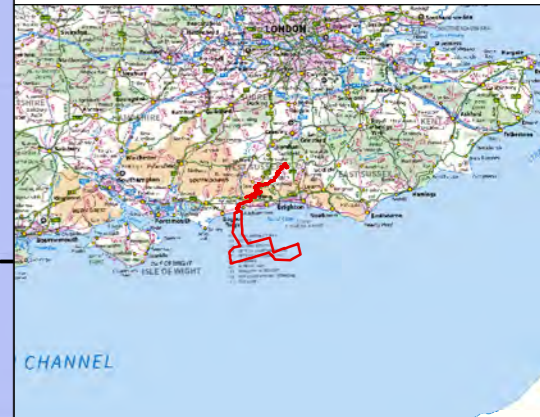
Blade Tips: 325 & 140m Observer height: 2m  
 DTM: OS T5 & T50 Surface features: Excluded  
 DTM resolution: 10m Earth curvature: Included

Sea level was modelled at 3.41m below Ordnance datum (equivalent of Lowest astronomical tide for Newhaven)



**Key**

- Proposed DCO Order Limits
- 50km Study Area
- Offshore Array Area
- 10km Radii
- Rampion 2 WTG
- Operational Rampion 1 WTG
- ⊙ Viewpoint
- County boundary
- Heritage Coasts
- Area of Outstanding Natural Beauty
- National Park

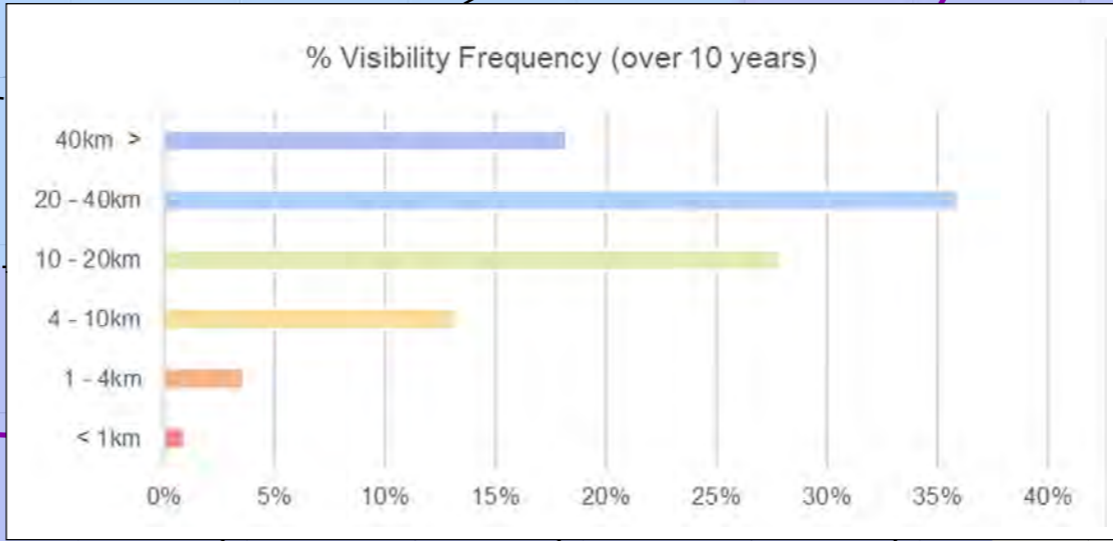


**Met Office visibility range**

- < 1km Very Poor Visibility
- 1 - 4km Poor Visibility
- 4 - 10km Moderate Visibility
- 10 - 20km Good Visibility
- 20 - 40km Very Good Visibility
- > 40km Excellent Visibility

Blade Tip:	325m	Observer height:	2m
DTM:	OS T5 & 50	Surface features:	Excluded
DTM resolution:	10m	Earth curvature:	Included

Sea level was modelled at 3.41m below Ordnance datum (equivalent of Lowest astronomical tide for Newhaven)



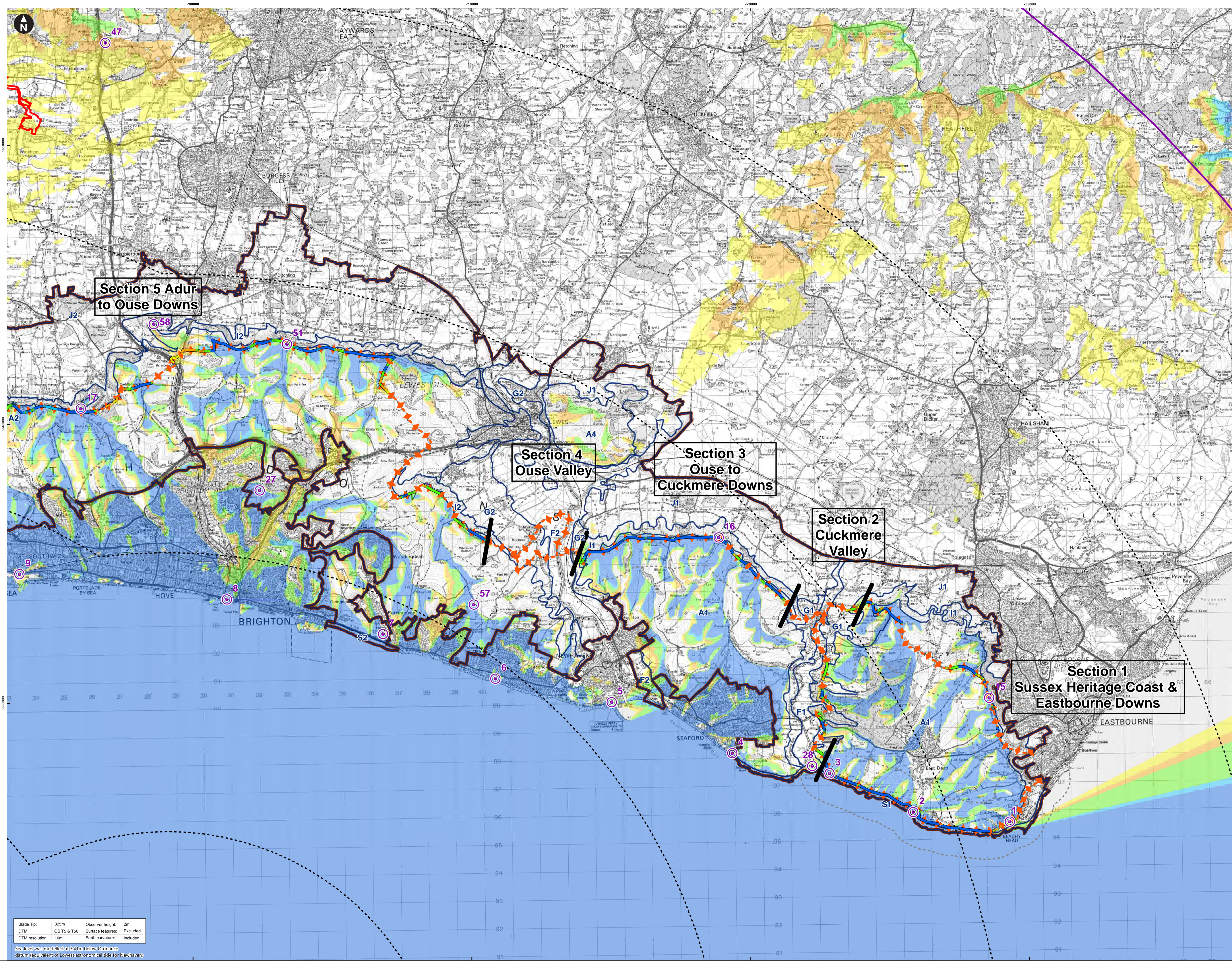
Rampion Extension Development

Rampion 2 Offshore Wind Farm

Figure 15.23 Blade tip ZTV with visibility range

Environmental Statement

System Identifier:		Version:		
42285-GOBE-ES-OF-FG-10-9537		3.0		
Company:	Drawn By:	Chk/Prvd:	Drawn Date:	Status:
OPEN	JM	WSP	06/06/2023	FINAL



Contains OS data © Crown copyright and database right (2022).  
 © Crown Copyright. All rights reserved (2022). Licence number 010001673. Data derived from RWI data © RWI 2022. Contains information licensed under the Open Government Licence v3.0.

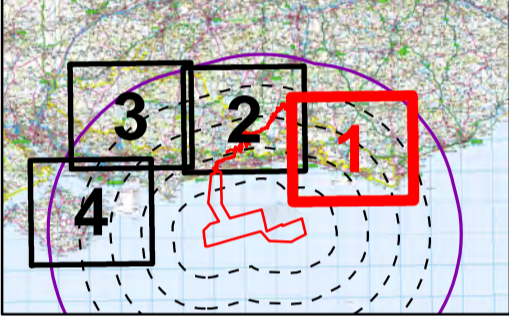
- Key**
- Proposed DCO Order Limits
  - 50km Study Area
  - 10km Radii
  - Viewpoint
  - SDNPA Landscape character
  - ◆◆◆ South Downs Way
  - 1km buffer from National Trail

National Trail assessed against blade tip ZTV  
 No. of turbines theoretically visible

- 1 - 13
- 14 - 26
- 27 - 39
- 40 - 52
- 53 - 65

Zone of theoretical visibility (blade tip)  
 No. of turbines theoretically visible

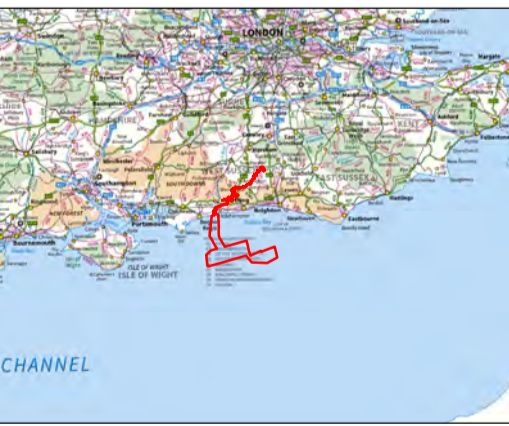
- 1 - 13
- 14 - 26
- 27 - 39
- 40 - 52
- 53 - 65



- Viewpoints**
- 1 - Beachy Head
  - 2 - Birling Gap
  - 3 - Seven Sisters Country Park
  - 4 - Seaford Head
  - 5 - Newhaven (Castle Hill)
  - 6 - Peacehaven
  - 7 - Beacon Hill, Rottingdean
  - 8 - Brighton sea front promenade
  - 9 - Shoreham/A259 coastal road
  - 15 - Willingdon Hill
  - 16 - Firle Beacon
  - 17 - Devil's Dyke
  - 27 - Hollingbury Golf Course/Hill Fort
  - 28 - Cuckmere Haven Beach
  - 47 - High Weald (near Bolney)
  - 51 - Ditchling Beacon
  - 57 - Telscomb Tye
  - 58 - Wolstonbury Hill

Blade Tip: 325m | Observer height: 2m  
 DTM: OS T5 & T50 | Surface features: Excluded  
 DTM resolution: 10m | Earth curvature: Included

Sea level was modelled at 3.41m below Ordnance datum (equivalent of Lowest Astronomical Tide for Newhaven)



Rampton Extension Development

Rampton 2 Offshore Wind Farm

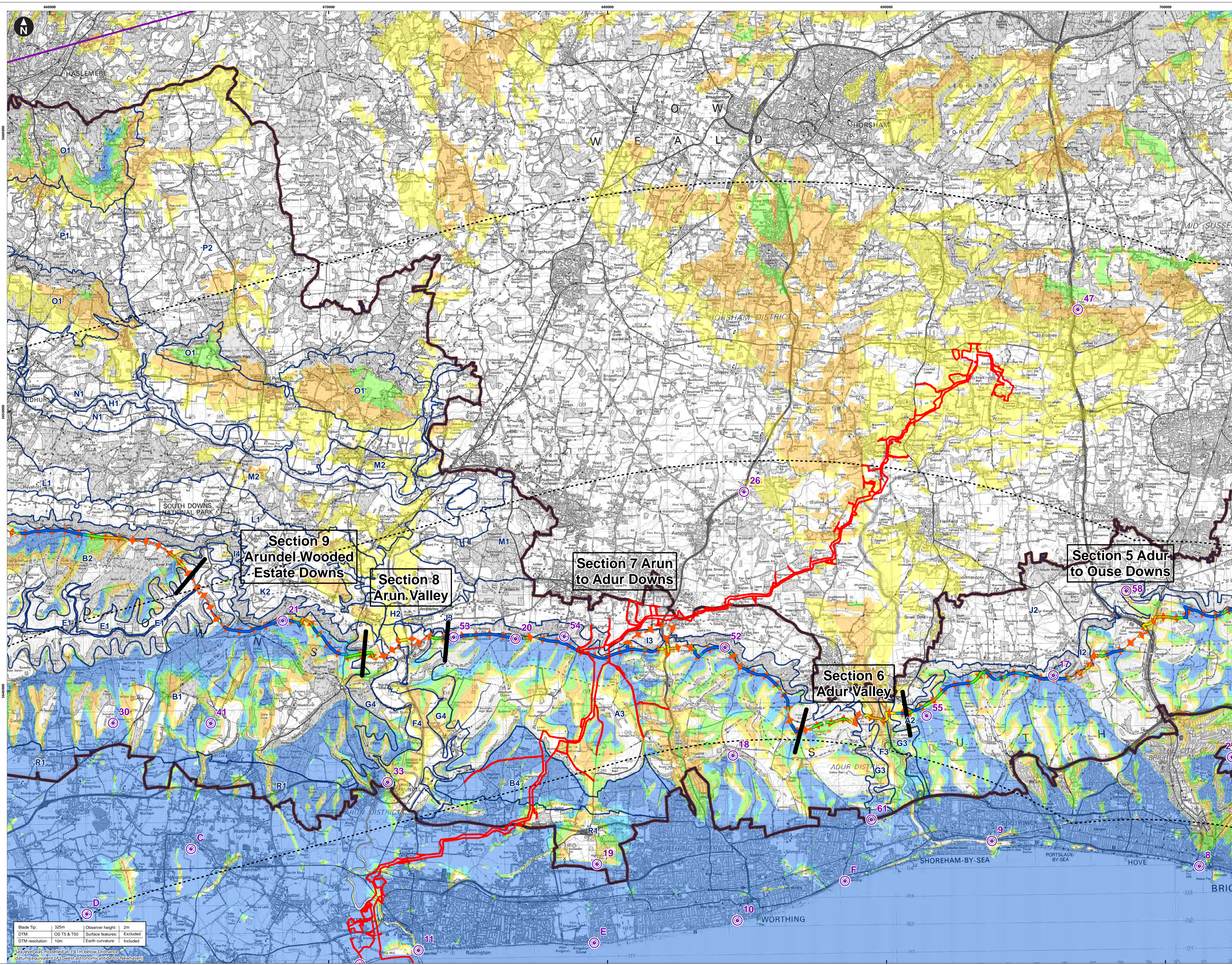
Figure 15.24a Blade Tip ZTV - National Trails Map 1 (East)

Environmental Statement

System Identifier: 42285-GOBE-ES-OF-FG-10-1586 | Version: 3.0

Company: OPEN | Drawn By: JIM | Chk/Approved: WSP | Drawn Date: 06/06/2023 | Status: FINAL

Document uncontrolled when printed | ISO A1 Landscape



Contains OS data © Crown copyright and database right (2022).  
 © Crown Copyright. All rights reserved (2022). Licence number 010001673. Data derived from RWE data © RWE 2022. Contains information licensed under the Open Government Licence v3.0.

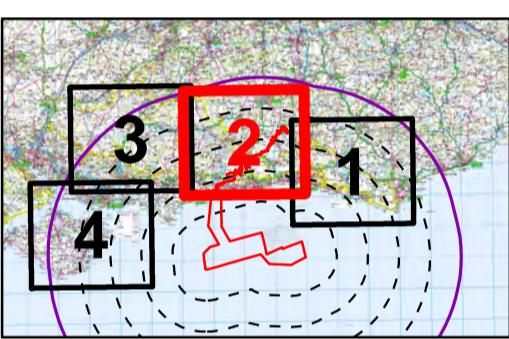
- Key**
- Proposed DCO Order Limits
  - 50km Study Area
  - 10km Radii
  - Viewpoint
  - SDNPA Landscape character
  - ◆◆ South Downs Way
  - 1km buffer from National Trail

National Trail assessed against blade tip ZTV  
 No. of turbines theoretically visible

- 1 - 13
- 14 - 26
- 27 - 39
- 40 - 52
- 53 - 65

Zone of theoretical visibility (blade tip)  
 No. of turbines theoretically visible

- 1 - 13
- 14 - 26
- 27 - 39
- 40 - 52
- 53 - 65



- Viewpoints**
- 8 - Brighton sea front promenade
  - 9 - Shoreham/A259 coastal road
  - 10 - Worthing sea front promenade
  - 11 - Littlehampton sea front promenade
  - 17 - Devil's Dyke
  - 18 - Cissbury Ring
  - 19 - Highdown Hill
  - 20 - Springhead Hill
  - 21 - Bignor Hill
  - 26 - Low Weald (A24, near Ashington)
  - 27 - Holingbury Golf Course/Hill Fort
  - 30 - Halnaker Windmill, north of Chichester
  - 33 - Arundel Castle
  - 40 - Climping Beach
  - 41 - Slindon Folly
  - 47 - High Weald (near Bolney)
  - 52 - Chantebury Ring
  - 53 - Amberley Mount
  - 54 - Chantry Hill
  - 55 - Beeding Hill
  - 58 - Wolstonbury Hill
  - 61 - A27 near Lancing College
  - C - Eastergate (proposed A29)
  - D - Footpath between A259 and Colworth
  - E - Ferring Gap
  - F - Lancing Beach

Blade Tip: 325m  
 DTM: OS T5 & T50  
 DTM resolution: 10m

Observer height: 2m  
 Surface features: Excluded  
 Earth curvature: Included

Sea level was modelled at 3.41m below Ordnance datum (equivalent of lowest astronomical tide for Newhaven)

Scale: 0 1 2 Kilometres  
 WGS 1984 UTM Zone 30N Transverse Mercator

Rampion 2 Offshore Wind Farm

**Rampion 2 WIND FARM**

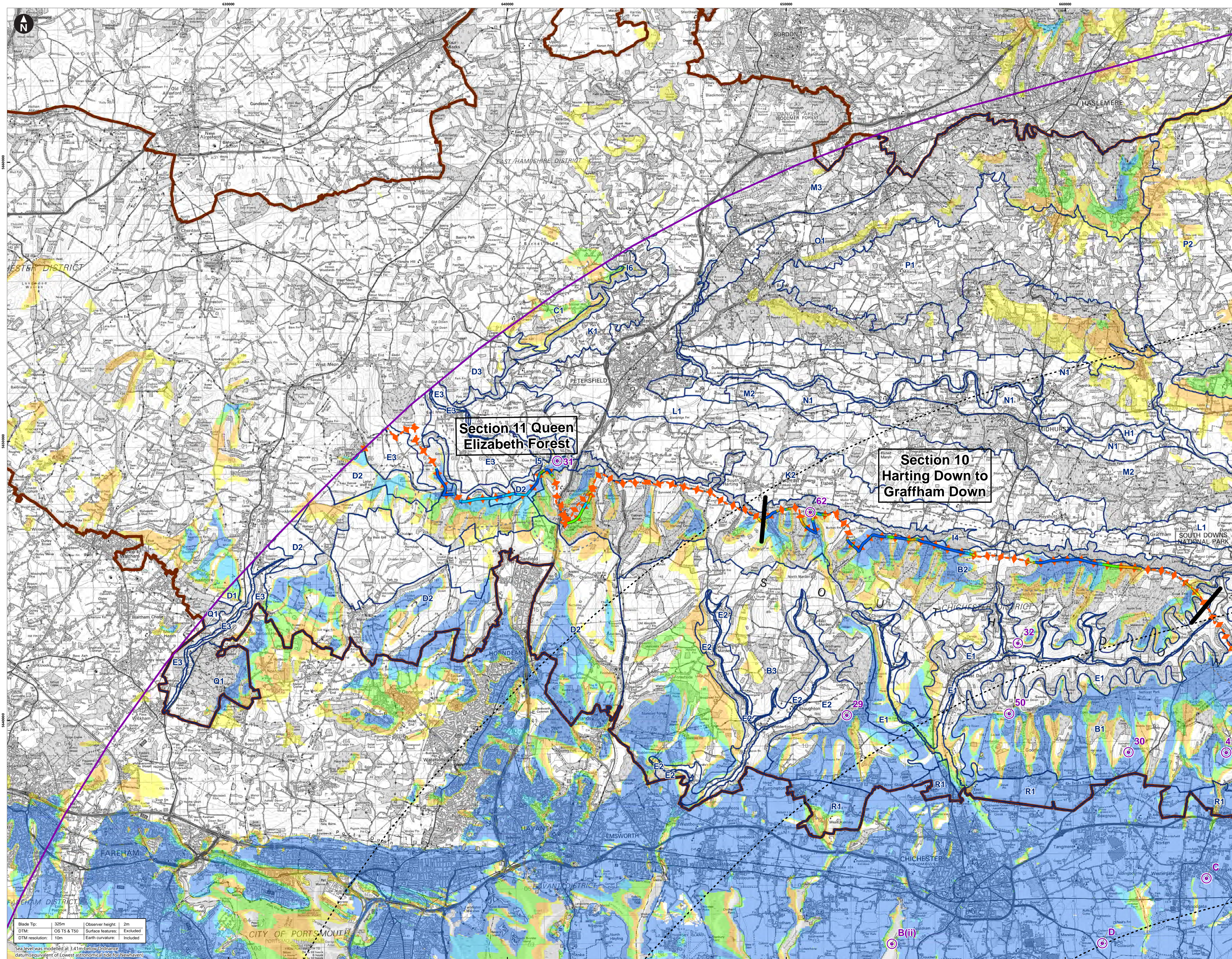
Figure 15.24b Blade Tip ZTV - National Trails Map 2 (Central)

Environmental Statement

System Identifier: 42285-GOBE-ES-OF-FG-10-1586  
 Version: 3.0

Company: WSP  
 Drawn By: JIM  
 Chk/Approved: WSP  
 Drawn Date: 06/06/2023  
 Status: FINAL

Document uncontrolled when printed



Contains OS data © Crown copyright and database right (2022).  
 © Crown Copyright. All rights reserved (2022). Licence number 010001673. Data derived from RWE data © RWE 2022. Contains information licensed under the Open Government Licence v3.0.

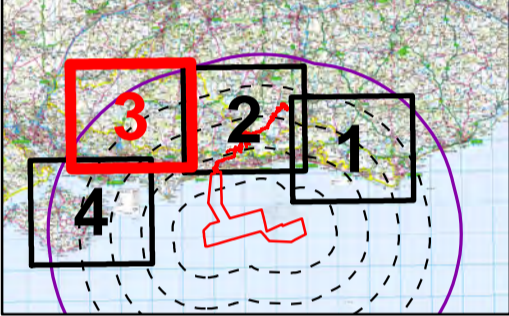
**Key**

- Proposed DCO Order Limits
- 50km Study Area
- 10km Radii
- Viewpoint
- SDNPA Landscape character
- ◆◆◆ South Downs Way
- 1km buffer from National Trail
- National Trail assessed against blade tip ZTV
- No. of turbines theoretically visible
- 1 - 13
- 14 - 26
- 27 - 39
- 40 - 52
- 53 - 65

Zone of theoretical visibility (blade tip)

No. of turbines theoretically visible

- 1 - 13
- 14 - 26
- 27 - 39
- 40 - 52
- 53 - 65



- Viewpoints**
- 29 - Kingley Vale National Nature Reserve
  - 30 - Hainaker Windmill, north of Chichester
  - 31 - Butser Hill National Nature Reserve
  - 32 - Levin Down
  - 41 - Slindon Folly
  - 50 - The Trundle
  - 62 - Beacon Hill, South Downs Way
  - B(ii) - Dell Quay
  - C - Eastergate (proposed A29)
  - D - Footpath between A259 and Colworth

Blade Tip: 325m | Observer height: 2m  
 DTM: OS T5 & T50 | Surface features: Excluded  
 DTM resolution: 10m | Earth curvature: Included

Sea level was modelled at 3.41m below Ordnance datum (equivalent of Lowest Astronomical Tide for Newhaven)

Scale: 0 1 2 Kilometres

160,000  
 WGS 1984 UTM Zone 30N Transverse Mercator

Ramplion 2  
 WIND FARM

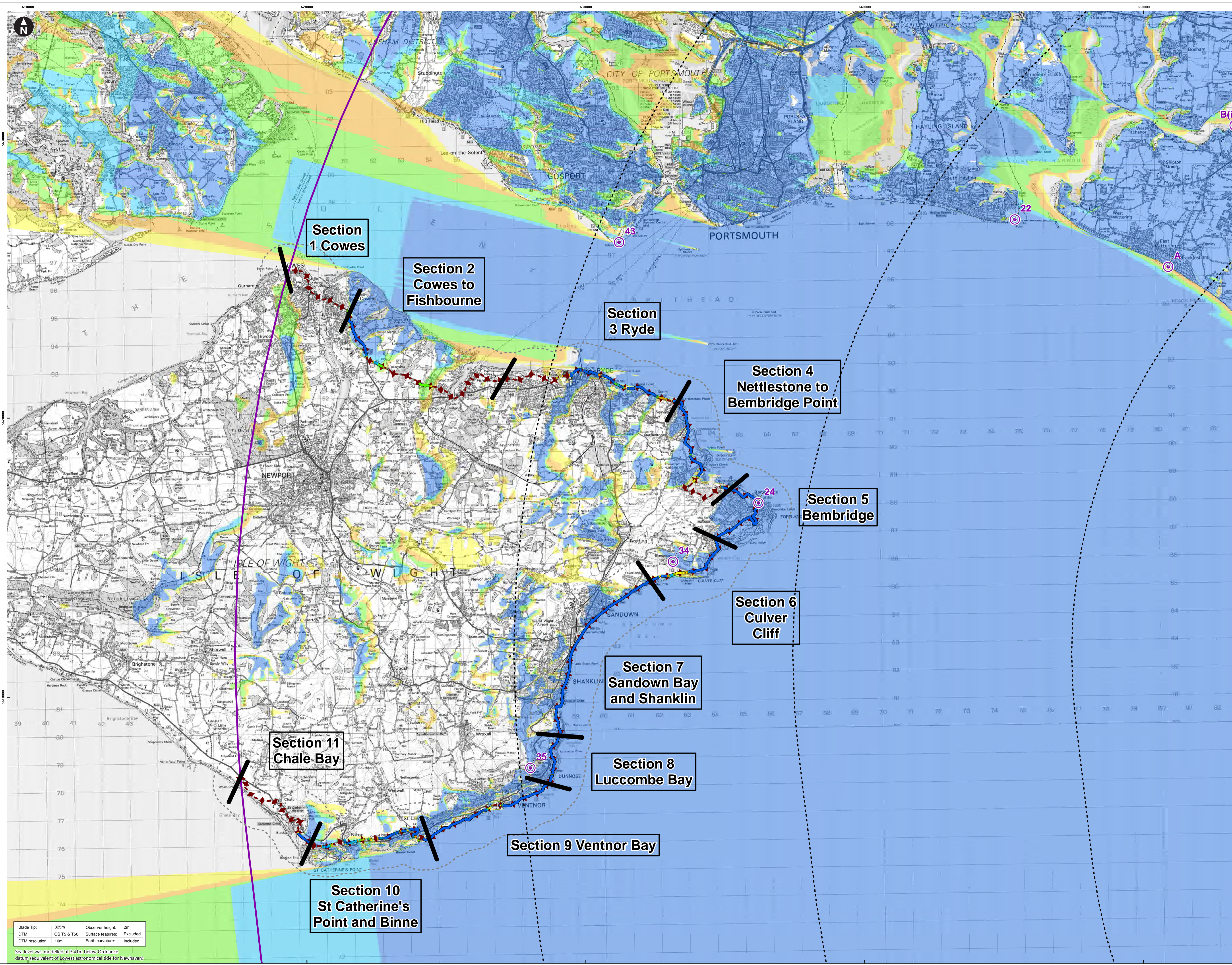
Ramplion 2 Offshore Wind Farm

Figure 15.24c Blade Tip ZTV - National Trails Map 3 (West)

Environmental Statement

System Identifier: 42285-GOBE-ES-OF-FG-10-1586 | Version: 3.0  
 Company: OPEN | Drawn By: WSP | Chk/Prv'd: JMW | Draw Date: 06/06/2023 | Status: FINAL

Document uncontrolled when printed | ISO A1 Landscape



Contains OS data © Crown copyright and database right (2022).  
 © Crown Copyright. All rights reserved (2022). Licence number 010001673. Data derived from RWE data © RWE 2022. Contains information licensed under the Open Government Licence v3.0.

**Key**

- Proposed DCO Order Limits
- 50km Study Area
- 10km Radii
- Viewpoint
- Isle of Wight Coastal Path
- 1km buffer from National Trail

National Trail assessed against blade tip ZTV

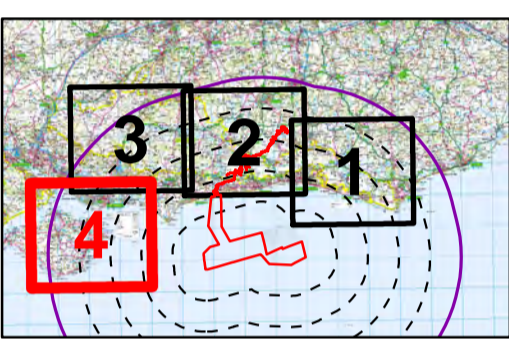
No. of turbines theoretically visible

- 1 - 13
- 14 - 26
- 27 - 39
- 40 - 52
- 53 - 65

Zone of theoretical visibility (blade tip)

No. of turbines theoretically visible

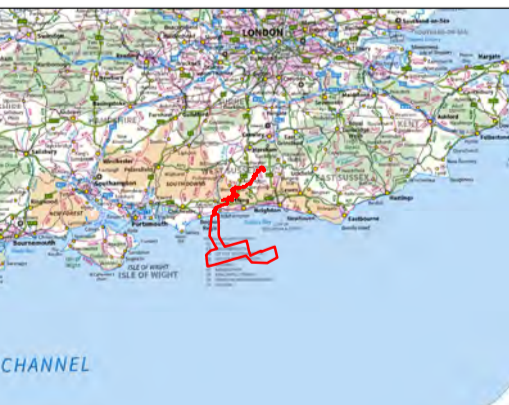
- 1 - 13
- 14 - 26
- 27 - 39
- 40 - 52
- 53 - 65



- Viewpoints**
- 22 - Eastoke Point (Chichester Harbour AONB)
  - 24 - Bembridge, Isle of Wight
  - 34 - Bembridge Fort
  - 35 - St. Boniface Down above Ventnor
  - 43 - Gillicker Point
  - A - East Wittering
  - B(i) - Chichester Marina

Blade Tip:	325m	Observer height:	2m
DTM:	OS T5 & T50	Surface features:	Excluded
DTM resolution:	10m	Earth curvature:	Included

Sea level was modelled at 3.41m below Ordnance datum (equivalent of Lowest Astronomical Tide for Newhaven)



160,000  
 WGS 1984 UTM Zone 30N Transverse Mercator

Ramplion 2  
 WIND FARM

Ramplion 2 Offshore Wind Farm

Figure 15.24d Blade Tip ZTV – National Trails  
 Map 4 (Isle of Wight)

Environmental Statement

System Identifier: 42285-GOBE-ES-OF-FG-10-1586  
 Version: 3.0

Company:	OPEN	Drawn By:	WSP	Drawn Date:	06/06/2023	Status:	FINAL
----------	------	-----------	-----	-------------	------------	---------	-------

Document uncontrolled when printed ISO A1 Landscape